



Overview

Institute for Organization Management is the U.S. Chamber of Commerce's professional development program for association, chamber, and other nonprofit executives. Since 1921, Institute has educated past, current, and future leaders from across the country, making it one of oldest and best regarded adult education programs in nonprofit management.

Today, Institute's curriculum educates executives on all facets of running a nonprofit organization. The program consists of four, weeklong sessions at four different sites across the country. While on-site, attendees participate in 24 hours of course instruction, on topics such as advocacy, new media, membership, finance, legal issues, human resources, and much more. Participants engage in lively discussions on a multitude of matters affecting the association and chamber industries, ultimately helping them build stronger organizations, better serve their members, and become leading business advocates.

Top 5 Reasons to Attend

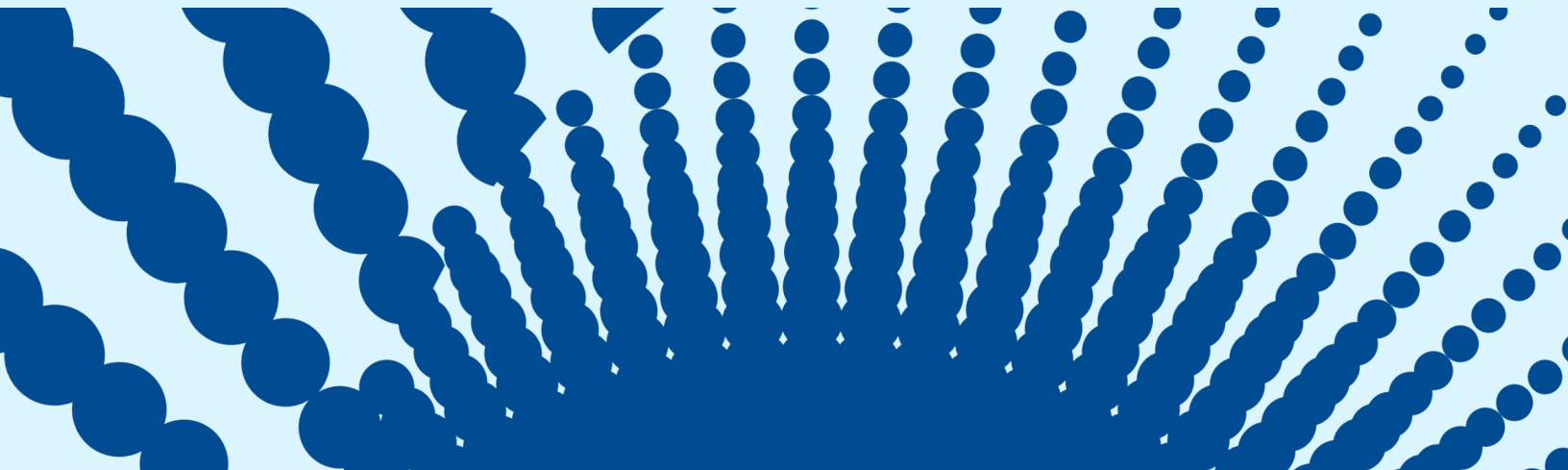
Expert Faculty. Institute's intensive coursework is taught by passionate leaders from various backgrounds, including executives of associations, chambers of commerce, and nonprofits; industry consultants; lawyers and CPAs; and professors. Our faculty will share real-world problem-solving solutions that will have you reinvigorated and prepared to tackle your greatest challenges, no matter the size.

Credibility. Graduates of Institute receive the IOM recognition, signifying 96 hours of course instruction in nonprofit management. The IOM recognition sends your peers the message that you're a reputable professional that actively participates in the nonprofit industry and its surrounding communities. IOM graduates are encouraged to add the IOM recognition after their name in all communications and virtual signatures.

Networking, Networking, Networking! Institute is a great opportunity to meet your peers and establish a strong network of other industry professionals. Each site features opportunities for casual conversation and building relationships.

Return on Investment. The Institute curriculum will assist and educate executives who represent their community on local, state, and national issues. The knowledge gained through your time spent at Institute will be invaluable moving forward.

Earn Credit Toward Your CAE & CCE Professional Certifications. Institute's curriculum is directly tied to the bodies of knowledge of the CAE and CCE, allowing you to earn credits or points to earn or maintain your industry certification.



Sites & Dates (Subject to Change)

2025 Winter Institute

University of Arizona

Tucson, AZ

January 5-9, 2025

2025 Southeast Institute

University of Georgia

Athens, GA

June 22-26, 2025

2025 Midwest Institute

University of Wisconsin

Madison, WI

June 1-5, 2025

2025 Northeast Institute

Villanova University

Villanova, PA

July 27-31, 2025

Scholarships & Enrollment Incentives

National Institute Scholarship Program

Who's It For: U.S. Chamber Members

What You Do: Fill out an online application at institute.uschamber.com/scholarships

What You Get: Each Institute site awards one scholarship worth \$500 toward a first-year tuition. The applicant's organization must be a member of the U.S. Chamber of Commerce.

Regent Scholarship Program

Who's It For: Everyone

What You Do: Fill out an online application at institute.uschamber.com/scholarships

What You Get: The Regent Scholarship Program provides financial assistance to both first-year and returning participants. Each year, these are awarded in varying amounts to assist with tuition.

Group Pricing

Who's It For: Any returning or first-year Institute attendee.

What You Do: Enroll more than one attendee from your organization.

What You Get: After the first attendee enrolls at the regular enrollment price, each additional student will receive a tuition discount of \$300.

Premier Investor Discount

Who's It For: Members of the U.S. Chamber's Association Committee of 100, Chamber of Commerce Committee of 100, Advantage, or Elite members of the U.S. Chamber.

What You Do: Enroll members of your staff in Institute.

What You Get: First-year students receive a tuition discount of \$570. Returning students receive a tuition discount of \$300.

